

DATASHEET

Product Description

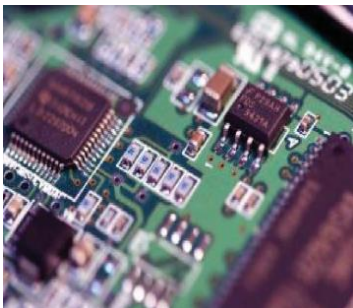
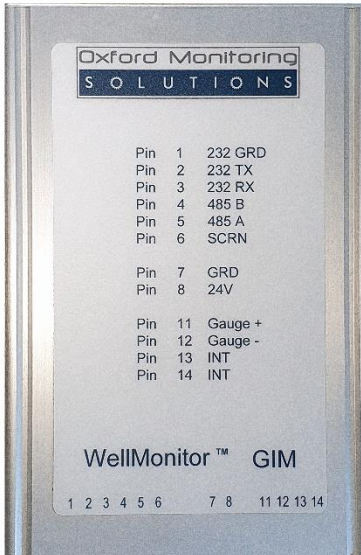
The Gauge Interface Module (**GIM**) is a compact, entry-level surface card that sends power to the downhole ESP gauge and decodes the returning gauge signal.

Using an isolated RS485 or RS232 Modbus RTU serial port to communicate, the GIM is designed to integrate with a variety of wellsite equipment from switchboards and variable speed drives (VSD), to RTUs and SCADA systems.

Key Features

- LED indicators
- Compact low-profile design
- Robust metal case
- Easy to use push fit connectors
- DIN Rail mounted

The GIM is powered by 24VDC, and is housed in a protective IP30 DIN rail enclosure for mounting inside of existing 3rd party equipment to minimise cost.



Specification	
Enclosure	IP30 rated metal case, DIN rail mounted
Power supply	24VDC, 140mA
Connections	3x multi-way push-fit terminal block plugs with sockets
Communications	RS 485/232 Modbus RTU
Indicators	4x LEDs (power, status, gauge, data)
Operating temp	-30°C to 75°C
Weight	<1.0Kg
Dimensions	6.5 x 4.3 x 1.8" [165 x 110 x 45mm] With fittings: 6.9 x 4.3 x 2.8" [175 x 110 x 70mm]

* Specifications are subject to change. Alternative specifications are available upon request.